

UTC LAG665F LINEAR INTEGRATED CIRCUIT

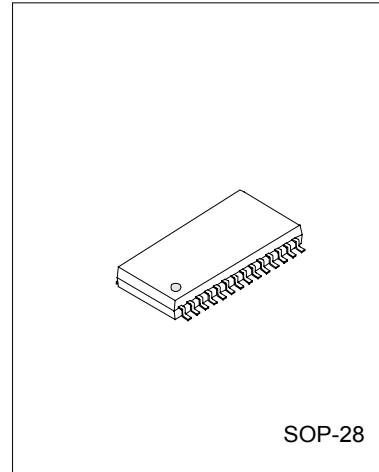
RADIO AND CASSETTE RECORDER CIRCUIT

DESCRIPTION

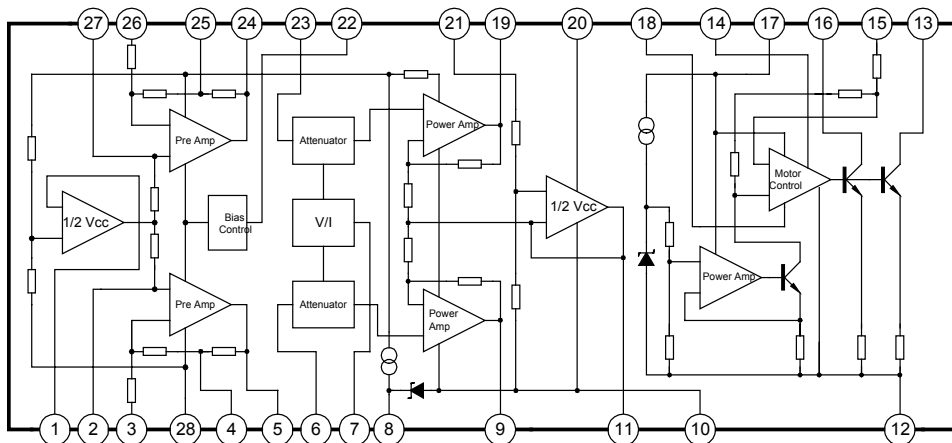
The UTC LAG665F is a monolithic integrated circuit, designed for portable radio cassette.

FEATURES

- *1-Chip stereo tape recorder with motor speed controller.
- *Operating supply voltage range: $V_{cc}=2\sim 5V$
- *Good volume control

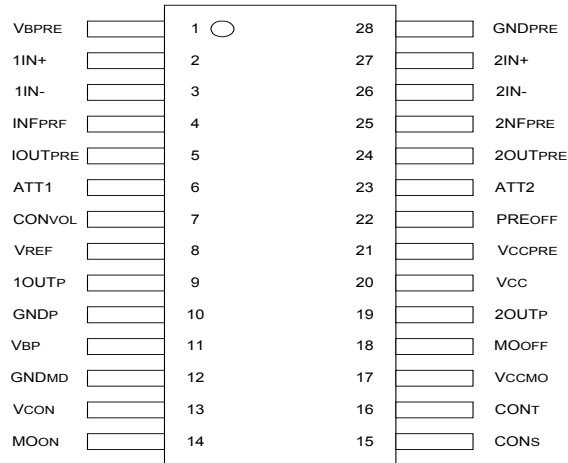


BLOCK DIAGRAM



UTC LAG665F LINEAR INTEGRATED CIRCUIT

PIN CONFIGURATION



PIN NO.	SYMBOL	DESCRIPTION	PIN NO.	SYMBOL	DESCRIPTION
1	VBPRE	Pre Amp Bias Voltage	15	CONs	Speed Control
2	1 IN+	Channel 1 "+" Input	16	CONT	Torquid Control
3	1 IN -	Channel 1 "-" Input	17	VCCMO	Motor Power Control
4	1 NFPRE	Feedback 1	18	MOOFF	Motor Forced Stop
5	1 OUTPRE	Pre Amp Output 1	19	2 OUTP	Power Amp Output 2
6	ATT 1	Attenuator 1	20	VCC	Supply Voltage
7	CONVOL	Volume Control	21	VCCPRE	Supply Voltage
8	VREF	Reference Voltage	22	PREOFF	Pre Amp Off
9	1 OUTP	Power Amp Output 1	23	ATT 2	Attenuator 2
10	GNDP	Power GND	24	2 OUTPRE	Pre Amp Output 2
11	VBP	Power Amp Bias Voltage	25	2 NFPRE	Feedback 2
12	GNDMD	Motor GND	26	2 IN-	Channel 2 "-" Input
13	VCON	Motor Control Voltage	27	2 IN+	Channel 2 "+" Input
14	MOON	Motor Forced Start	28	GNDPRE	Pre GND

UTC LAG665F LINEAR INTEGRATED CIRCUIT

ABSOLUTE MAXIMUM RATINGS(Ta=25°C)

PARAMETER	SYMBOL	VALUE	UNIT
Supply Voltage	Vcc	-0.3~+7.5	V
Power Dissipation	Pd	450	mW
Operating Voltage	Vop	2~5	V
Operating Temperature	Topr	-20~+65	°C
Storage Temperature	Tstg	-40~+125	°C

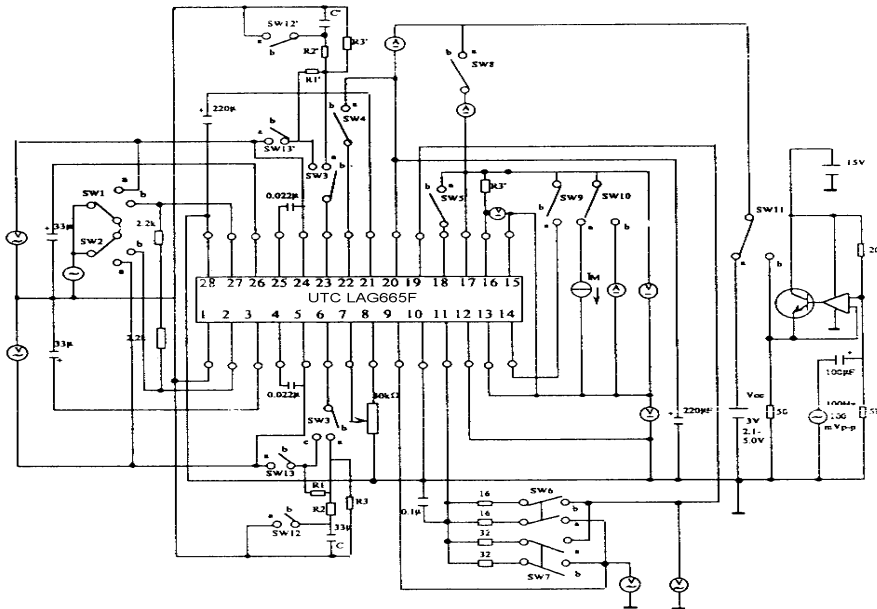
ELECTRICAL CHARACTERISTICS(Ta=25°C, Vcc=3V, f=1kHz, RL=16Ω, unless otherwise specified)

PARAMETER	SYMBOL	TEST CONDITIONS	MIN	TYP	MAX	UNIT
Supply Current	Icc	Vin=0V, Im=0mA		18	25	mA
PRE-AMPLIFIER						
Open Loop Gain	Gvo	Vo=-10dBm, RL=∞		72		dB
Close Loop Gain	Gvc	Vo=-10dBm	40	42	44	dB
Maximum Output Voltage	Vom	THD=10%	0.45	0.6		Vrms
Total Harmonic Distortion	THD	Vout=100mVrms		0.05	0.5	%
Output Noise Voltage	Von	Vin=0, Rg=2.2k, BPF(30~20k)		150	300	μVrms
Input Impedance	Zin	Vout=-10dBm	18	22		kΩ
Cross Talk between CH	CT	Rg=2.2k, Vout=-10dBm	30			dB
Pre Amp						
Output Voltage when Pre-Off	Vooff	Vin=100mVrms			-50	dB
Output Impedance when Pre-Off	Rooff			10		kΩ
Input Impedance when Pre-Off	Rioff			10		kΩ
Attenuator						
Maximum Input Voltage	Vimax		0.2			Vrms
Maximum Attenuation	Vamax	Vcont=Min	66			dB
Attenuation Error	Vaerr	Vcont=Max		0		dB
Input Impedance	Zia		15	20		kΩ
Control Terminal Input Impedance	Zicot		100			kΩ
Power Amplifier						
Voltage Gain	GV	Pout=5mW	26	28	30	dB
Channel Voltage Difference	ΔGV	Vcont=Max		0	3	dB
Maximum Output Power I	Pom 1	THD=10%, RL=32Ω	20	28		mW
Maximum Output Power II	Pom 2	THD=10%, RL=16Ω	30			mW
Total Harmonic Distortion	THD	Pout=5mW		0.2	2	%
Cross Talk between CH	CT	Pout=5mW	20	30		dB
Output Noise Voltage	Von	Rg=2.2k, Vcont=Min		0.25	1	mVrms
Ripple Rejection	RR	Vcc=3V, 100Hz, 100mVp-p	34	40		dB
Pre + Pulse Boost + Power Noise	Vnto	Vin=0V, Rg=2.2k, Vcont=Max*		6	9	mVrms
Motor *Vcc=3V, Im=100mA						
Current Consumption	IMC			3	5	mA
Starting Current	IMS		500			mA
Reference Voltage	Vref	Pin 15~Pin 16	0.72	0.8	0.87	V

UTC LAG665F LINEAR INTEGRATED CIRCUIT

PARAMETER	SYMBOL	TEST CONDITIONS	MIN	TYP	MAX	UNIT
Reference Voltage Change I	Vref 1	Vcc=2.1~5V		0.05		%/V
Reference Voltage Change II	Vref 2	Im=25~250mA		0.01		%/mA
Reference Voltage Change III	Vref 3	Ta=-10~50°C		0.01		%/°C
Current Factor	K		32	38	43	
Current Factor Change I	K 1	Vcc=2.1~5V		0.5		%/V
Current Factor Change II	K 2	Im=25~250mA		0.05		%/mA
Current Factor Change III	K 3	Ta=-10~50°C		0.02		%/°C
Saturation Voltage at Forced ON	VCEsa	IM=200mA, Pin 14=Vcc			0.6	V
Input Impedance at Forced ON Pin	Rion			5.6		KΩ
Leakage Current at Forced OFF	IML				200	μA
Input Impedance at Forced OFF Pin	Ricon			33		KΩ

TEST CIRCUIT



NOTE1 : SW12, SW12
 R1, R1'=33kΩ
 R2, R2'=5.1kΩ
 R3, R3'=200kΩ
 R2, R2=5.1kΩ
 C1, C1'=0.1μF

NOTE2 : See figure 1 for SW

UTC LAG665F LINEAR INTEGRATED CIRCUIT

FIGURE 1

Item	Symbol	SW No.											TEST CONDITION
		1	2	3,3'	4	5	6	7	8	9	10	11	
													Vcc=3V,f=1kHz,RL=16Ω
AMP													
Supply Current	ICC	c	c	a	b	b	a	b	b	b	a	a	
Close Loop Gain	Gvc	b	b	b	b	b	a	b	b	b	a	a	Im=0mA
Maximum Output Voltage	Vom	b	b	b	b	b	a	b	b	b	a	a	Vo=244mV
Total Harmonic Distortion	THD	b	b	b	b	b	a	b	b	b	a	a	Vo=400mV
Output Noise Voltage	Von	c	c	b	b	b	a	b	b	b	a	a	B.P.F.(30-20kHz)
Cross Talk between CH	CT	b/ c	c/ b	b	b	b	a	b	b	b	a	a	Vo=244mV
Output Voltage when Pre-Off	Vooff	b	b	b	a	b	a	b	b	b	a	a	Vin=100mV
Attenuator													
Maximum Input Voltage	Vimax	a	a	a	a	b	a	b	b	b	a	a	Vr=Min, THD=10%,
Maximum Attenuation	Vamax	a	a	a	a	b	a	b	b	b	a	a	
Power AMP													
Voltage Gain	GV	a	a	a	a	b	a	b	b	b	a	a	Pout=5mV
Channel Voltage Difference	ΔGV	a	a	a	a	b	a	b	b	b	a	a	VR=MAX
Maximum Output Power I	Pom 1	a	a	a	a	b	b	a	b	b	a	a	RL=32Ω,THD=10%
Maximum Output Power II	Pom 2	a	a	a	a	b	a	b	b	b	a	a	RL=16Ω,THD=10%

UTC assumes no responsibility for equipment failures that result from using products at values that exceed, even momentarily, rated values (such as maximum ratings, operating condition ranges, or other parameters) listed in products specifications of any and all UTC products described or contained herein. UTC products are not designed for use in life support appliances, devices or systems where malfunction of these products can be reasonably expected to result in personal injury. Reproduction in whole or in part is prohibited without the prior written consent of the copyright owner. The information presented in this document does not form part of any quotation or contract, is believed to be accurate and reliable and may be changed without notice.