



U74LVC04A

CMOS IC

HEX INVERTERS

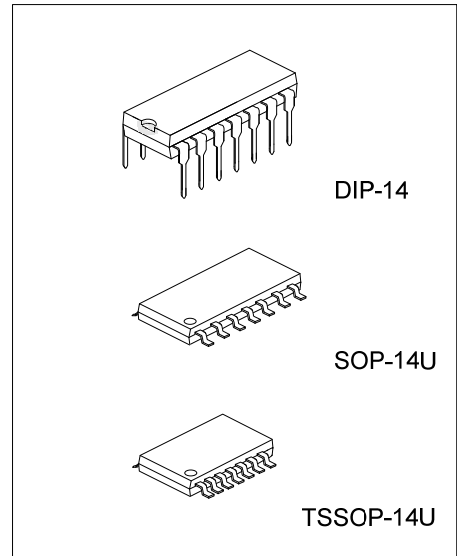
DESCRIPTION

The UTC **U74LVC04A** consists of six independent inverters, it provides the function $Y = \bar{A}$.

Inputs can be driven from either 3.3V or 5V devices, so the device can be used in a mix 3.3V/5V system.

FEATURES

- * Operation Voltage Range: 1.65~3.6V
- * Low Power Dissipation
- * Input accept voltage to 5.5V

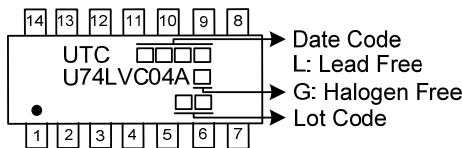


ORDERING INFORMATION

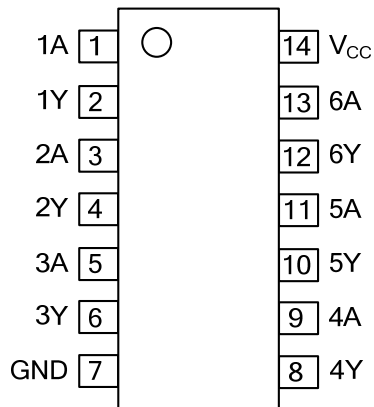
Ordering Number		Package	Packing
Lead Free	Halogen Free		
U74LVC04AL-D14-T	U74LVC04AG-D14-T	DIP-14	Tube
U74LVC04AL-UEA-R	U74LVC04AG-UEA-R	SOP-14U	Tape Reel
U74LVC04AL-UEB-R	U74LVC04AG-UEB-R	TSSOP-14U	Tape Reel

<p>U74LVC04AG-D14-T</p> <p>(1) Packing Type (2) Package Type (3) Green Package</p>	<p>(1) T: Tube, R: Tape Reel (2) D14: DIP-14, UEA: SOP-14U, UEB: TSSOP-14U (3) G: Halogen Free and Lead Free, L: Lead Free</p>
--------------------------------------------------------------------------------------------	----------------------------------------------------------------------------------------------------------------------------------------

MARKING



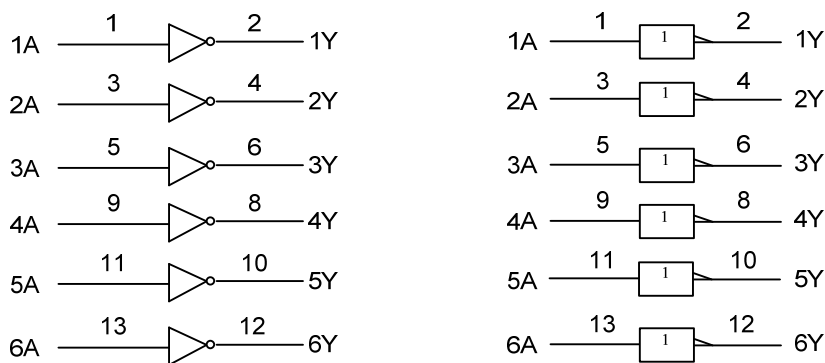
■ PIN CONFIGURATION



■ FUNCTION TABLE (each gate)

INPUT	OUTPUT
A	Y
L	H
H	L

■ LOGIC DIAGRAM (positive logic)



IEC logic symbol

■ ABSOLUTE MAXIMUM RATINGS (T_A = 25°C, unless otherwise specified)

PARAMETER	SYMBOL	RATINGS	UNIT
Supply Voltage	V _{CC}	-0.5 ~ 6.5	V
Input Voltage	V _{IN}	-0.5 ~ 6.5	V
Output Voltage(active mode)	V _{OUT}	-0.5 ~ V _{CC} +0.5	V
Input Clamp Current(V _{IN} <0)	I _{IK}	-50	mA
Output Clamp Current(V _{OUT} <0)	I _{OK}	-50	mA
Output Current	I _{OUT}	±50	mA
V _{CC} or GND Current	I _{CC}	±100	mA
Storage Temperature	T _{STG}	-65 ~ +150	°C

Note: Absolute maximum ratings are those values beyond which the device could be permanently damaged. Absolute maximum ratings are stress ratings only and functional device operation is not implied.

■ RECOMMENDED OPERATING CONDITIONS

PARAMETER	SYMBOL	CONDITIONS	MIN	TYP	MAX	UNIT
Supply Voltage	V _{CC}	Operating	1.65		3.6	V
		Data retention only	1.5			V
Input Voltage	V _{IN}		0		5.5	V
Output Voltage	V _{OUT}		0		V _{CC}	V
Operating Temperature	T _A		-40		+125	°C

■ THERMAL DATA

PARAMETER	SYMBOL	RATINGS	UNIT
Junction to Ambient	DIP-14	70	°C/W
	SOP-14U	90	°C/W
	TSSOP-14U	105	°C/W

■ STATIC CHARACTERISTICS (T_A = 25°C, unless otherwise specified)

PARAMETER	SYMBOL	TEST CONDITIONS	MIN	TYP	MAX	UNIT
High-Level Input Voltage	V _{IH}	V _{CC} = 1.65V~1.95V	0.65 × V _{CC}			V
		V _{CC} =2.3V~2.7V	1.7			V
		V _{CC} = 2.7V~3.6V	2			V
Low-Level Input Voltage	V _{IL}	V _{CC} = 1.65V~1.95V			0.35 × V _{CC}	V
		V _{CC} =2.3V~2.7V			0.7	V
		V _{CC} = 2.7V~3.6V			0.8	V
High-Level Output Voltage	V _{OH}	V _{CC} = 1.65V~3.6V, I _{OH} =-100μA	V _{CC} -0.2			V
		V _{CC} = 1.65V, I _{OH} =-4mA	1.29			V
		V _{CC} = 2.3V, I _{OH} =-8mA	1.9			V
		V _{CC} = 2.7V, I _{OH} =-12mA	2.2			V
		V _{CC} = 3V, I _{OH} =-12mA	2.4			V
Low-Level Output Voltage	V _{OL}	V _{CC} = 1.65V~3.6V, I _{OL} =100μA			0.1	V
		V _{CC} = 1.65V, I _{OL} =4mA			0.24	V
		V _{CC} = 2.3V, I _{OL} =8mA			0.3	V
		V _{CC} = 2.7V, I _{OL} =12mA			0.4	V
		V _{CC} = 3V, I _{OL} =24mA			0.55	V
Input Leakage Current	I _{I(LEAK)}	V _{CC} = 3.6V, V _{IN} =5.5V or GND			±1	μA
Quiescent Supply Current	I _Q	V _{CC} = 3.6V, V _{IN} =V _{CC} or GND, I _{OUT} =0			1	μA
Additional quiescent Supply Current	Δ I _Q	V _{CC} = 2.7V ~ 3.6V One input at V _{CC} - 0.6V, other inputs at V _{CC} or GND			500	μA
Input Capacitance	C _{IN}	V _{CC} = 3.3V, V _{IN} =V _{CC} or GND		5		pF

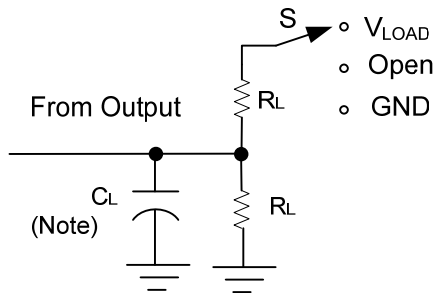
■ DYNAMIC CHARACTERISTICS (T_A = 25°C, unless otherwise specified)

PARAMETER	SYMBOL	TEST CONDITIONS	MIN	TYP	MAX	UNIT
Propagation Delay From Input (A) to Output(Y)	t _{PLH} /t _{PHL}	V _{CC} =1.8V±0.15V	1	4.1	7.5	ns
		V _{CC} =2.5V±0.2V	1	3.6	7	ns
		V _{CC} =2.7V	1	3	5.3	ns
		V _{CC} =3.3V±0.3V	1	2.5	4.3	ns

■ OPERATING CHARACTERISTICS (T_A = 25°C, unless otherwise specified)

PARAMETER	SYMBOL	TEST CONDITIONS	MIN	TYP	MAX	UNIT
Power Dissipation Capacitance	C _{pd}	V _{CC} =1.8V, f=10MHz		6		pF
		V _{CC} =2.5V, f=10MHz		7		pF
		V _{CC} =3.3V, f=10MHz		8		pF

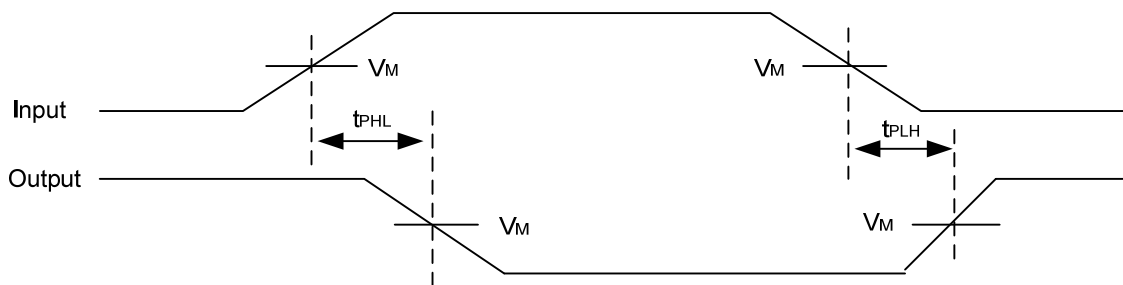
■ TEST CIRCUIT AND WAVEFORMS



TEST	S
t_{PLH}/t_{PHL}	Open
t_{PHZ}/t_{PZH}	GND
t_{PLZ}/t_{PZL}	V_{LOAD}

Note: C_L includes probe and jig capacitance.

V_{CC}	V_{IN}	t_r, t_f	V_M	V_{LOAD}	C_L	R_L	V_{Δ}
$1.8V \pm 0.15V$	V_{CC}	$\leq 2ns$	$V_{CC}/2$	$2 \times V_{CC}$	30pF	1K Ω	0.15V
$2.5V \pm 0.2V$	V_{CC}	$\leq 2ns$	$V_{CC}/2$	$2 \times V_{CC}$	30pF	500 Ω	0.15V
2.7V	2.7V	$\leq 2.5ns$	1.5V	6V	50pF	500 Ω	0.3V
$3.3V \pm 0.3V$	2.7V	$\leq 2.5ns$	1.5V	6V	50pF	500 Ω	0.3V



UTC assumes no responsibility for equipment failures that result from using products at values that exceed, even momentarily, rated values (such as maximum ratings, operating condition ranges, or other parameters) listed in products specifications of any and all UTC products described or contained herein. UTC products are not designed for use in life support appliances, devices or systems where malfunction of these products can be reasonably expected to result in personal injury. Reproduction in whole or in part is prohibited without the prior written consent of the copyright owner. UTC reserves the right to make changes to information published in this document, including without limitation specifications and product descriptions, at any time and without notice. This document supersedes and replaces all information supplied prior to the publication hereof.