



UMD9124A

Preliminary

CMOS IC

DC TAIL ROTOR MOTOR, STEERING GEAR MOTOR DRIVE CIRCUIT

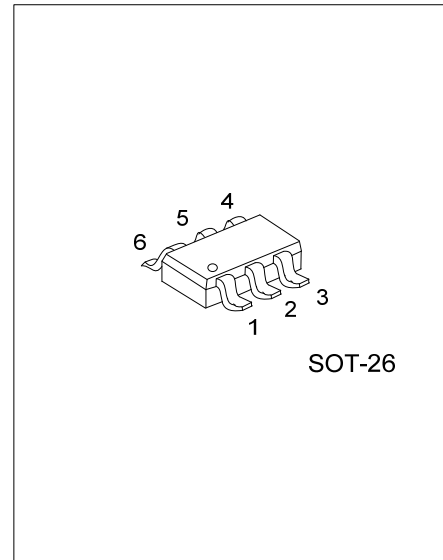
■ DESCRIPTION

UTC **UMD9124A** is an integrated brush DC motor drive solution for battery-powered toys, low-voltage or battery-powered motion control applications. It has H bridge driver and uses the PMOS and NMOS power transistors with low output resistance. Low on-resistance ensures the circuit to consume lower power in operating at a continuous current, and ensures the circuit to operate stably for a long time. The circuit has a wide working voltage range from 2.5V to 5.5V. The maximum continuous output current reaches 0.6A, and the maximum peak output current can be 1.0A when V_{CC} is 4V.

UTC **UMD9124A** has on-chip temperature protection function. When load motor with low internal resistance is in locked rotor, UTC **UMD9124A** output current will increase momentarily, power dissipation of the circuit will go up sharply, and the chip temperature will soar. But, when the chip temperature exceeds a maximum temperature point (typically 160°C) set by internal temperature protection circuit, the internal circuit will switch off the on-chip power switching transistor of UTC **UMD9124A**, and switch off load current, preventing potential safety hazards such as fuming, igniting of plastic package caused by over temperature etc. Only after having confirmed that the circuit has returned to safety temperature, the on-chip temperature hysteresis circuit can be allowed to re-control the circuit.

■ FEATURES

- * Low standby current (0.1μA typ.)
- * PMOS and NMOS power transistors with low output resistance
 - If I_O is 100mA, R_{ON} of power transistor is 1.05Ω
 - If I_O is 200mA, R_{ON} of power transistor is 1.12Ω
 - If I_O is 300mA, R_{ON} of power transistor is 1.2Ω
- * Built-in Subsequent stream diode
 - No external diode required
- * Low input current
 - Pull-down resistance is 2.1MΩ typical
 - 1.4uA input current when input voltage is 3V
- * On-chip thermal shut down (TSD) with hysteresis

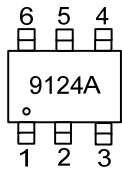


■ ORDERING INFORMATION

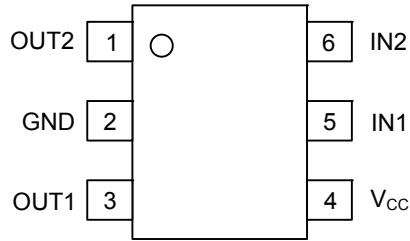
Ordering Number		Package	Packing
Lead Free	Halogen Free		
UMD9124AL-AG6-R	UMD9124AG-AG6-R	SOT-26	Tape Reel

<p>UMD9124AG-AG6-R</p>	<p>(1) R: Tape Reel</p> <p>(2) AG6: SOT-26</p> <p>(3) G: Halogen Free and Lead Free, L: Lead Free</p>
------------------------	---

■ MARKING



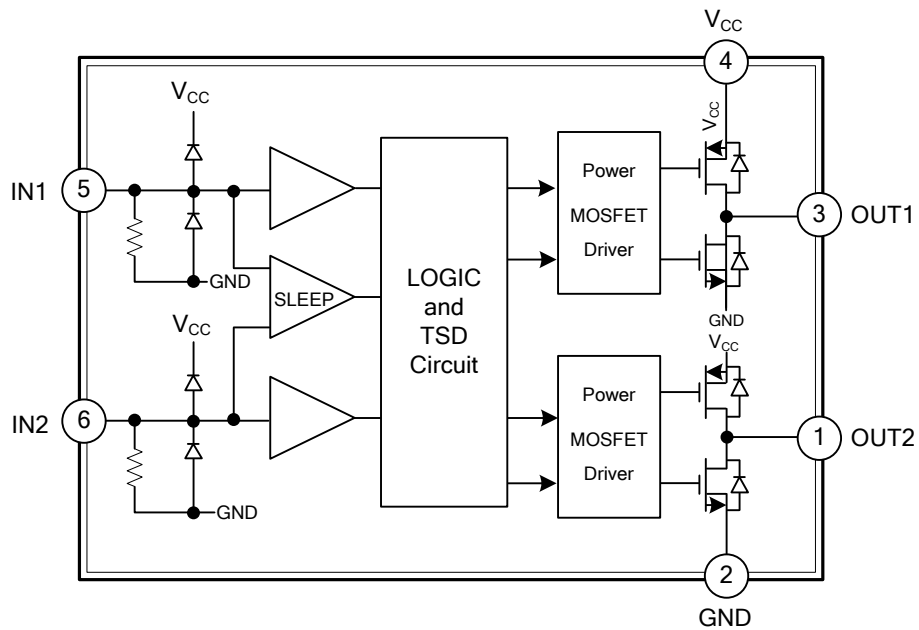
■ PIN CONFIGURATION



■ PIN DESCRIPTION

PIN NO.	PIN NAME	DESCRIPTION
1	OUT2	Reverse Drive Output Pin
2	GND	Ground
3	OUT1	Forward Drive Output Pin
4	V _{CC}	Supply Voltage
5	IN1	Forward Control Input Pin
6	IN2	Reverse Control Input Pin

■ BLOCK DIAGRAM



■ LOGIC TRUTH TABLE

IN1	IN2	OUT1	OUT2	FUNCTION
L	L	Z	Z	Standby (Stop)
H	L	H	L	Forward rotation
L	H	L	H	Backward rotation
H	H	L	L	Brake

■ ABSOLUTE MAXIMUM RATING (T_A=25°C, unless otherwise specified)

PARAMETER	SYMBOL	RATINGS	UNIT
Maximum Supply Voltage	V _{CC}	6.0	V
Maximum External Output Voltage	V _{OUT}	V _{CC}	V
Maximum External Input Voltage	V _{IN}	V _{CC}	V
Peak Output Current/Channel	I _{OUT PEAK}	1.0	A
Maximum continuous output current	I _{OUT}	0.65	A
Maximum power	P _D	0.45	W
Junction Temperature	T _J	+150	°C
Operational Temperature Range	T _{OPR}	-20 ~ +85	°C
Storage Temperature	T _{STG}	-55 ~ +150	°C

Note: Absolute maximum ratings are those values beyond which the device could be permanently damaged. Absolute maximum ratings are stress ratings only and functional device operation is not implied.

■ THERMAL DATA

PARAMETER	SYMBOL	RATINGS	UNIT
Junction to Ambient	θ _{JA}	278	°C/W

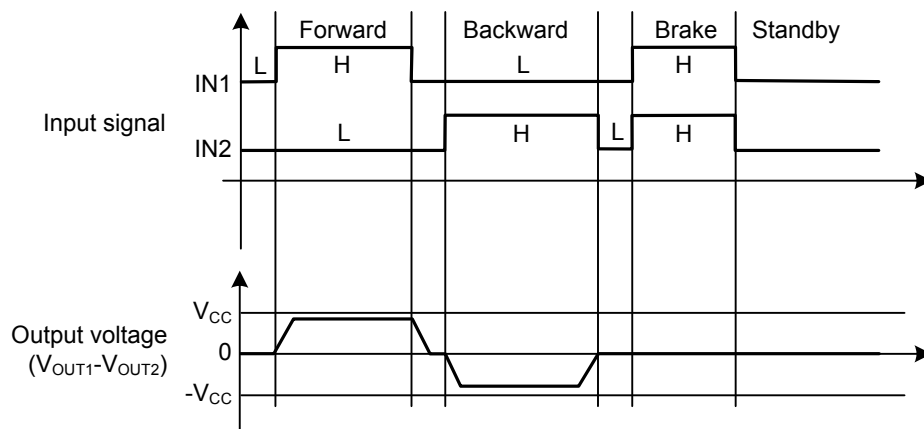
■ RECOMMENDED OPERATIONAL CONDITIONS (T_A=25°C, unless otherwise specified)

PARAMETER	SYMBOL	MIN	TYP	MAX	UNIT
Supply Voltage	V _{CC}	2.5		5.5	V
Input Voltage	V _{IN}	0		V _{CC}	V
Output current from OUT1 to OUT2 when V _{CC} =4.5V	I _{OC}		400	600	mA

■ ELECTRICAL CHARACTERISTICS (T_A=25°C, V_{CC}=3V, unless otherwise stated)

PARAMETER	SYMBOL	TEST CONDITIONS	MIN	TYP	MAX	UNIT
THE POWER SUPPLY PARAMETERS						
V _{CC} Standby Current	I _{VCCST}	IN1=IN2=L, V _{CC} =6V, Output opened			0.99	μA
V _{CC} Static Supply Current	I _{VCC}	IN1=H or IN2=H; Output opened		100		μA
Input Logic Level						
Input High Level	V _{INH}	V _{CC} =3V		0.7×V _{CC}		V
Input Low Level	V _{INL}	V _{CC} =3V			0.2×V _{CC}	V
Input High Level Current	I _{INH}	V _{INH} =3V, V _{CC} =3V		1.4		μA
Input the Pull-Down Resistor	R _{IN}	V _{INH} =3V, V _{CC} =3V		2.1		MΩ
THE POWER TUBE LEADS TO INTERNAL RESISTANCE						
Output Resistance	R _{ON}	I _O =±100mA, V _{CC} =3V		1.05		Ω
		I _O =±200mA, V _{CC} =3V		1.12		
		I _O =±300mA, V _{CC} =3V		1.2		
PROTECTION FUNCTION PARAMETERS						
Protection Temperature	TSD			160		°C
TSD Hysteresis	TSDH			20		°C

■ TYPICAL WAVEFORM

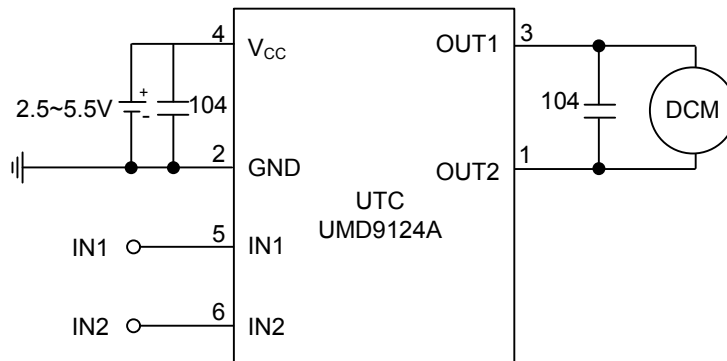


■ APPLICATION INFORMATION

Thermal shut down (TSD)

When Junction Temperature reaches 160°C, the internal circuit will switch off the on-chip power switching transistor of UTC **UMD9124A**, preventing potential safety hazards caused by over temperature. The temperature hysteresis of TSD is 25°C typical.

■ TYPICAL APPLICATION CIRCUIT



UTC assumes no responsibility for equipment failures that result from using products at values that exceed, even momentarily, rated values (such as maximum ratings, operating condition ranges, or other parameters) listed in products specifications of any and all UTC products described or contained herein. UTC products are not designed for use in life support appliances, devices or systems where malfunction of these products can be reasonably expected to result in personal injury. Reproduction in whole or in part is prohibited without the prior written consent of the copyright owner. UTC reserves the right to make changes to information published in this document, including without limitation specifications and product descriptions, at any time and without notice. This document supersedes and replaces all information supplied prior to the publication hereof.